

User Manual

Version 2.0

Accelign™ Pulse Vibration Device

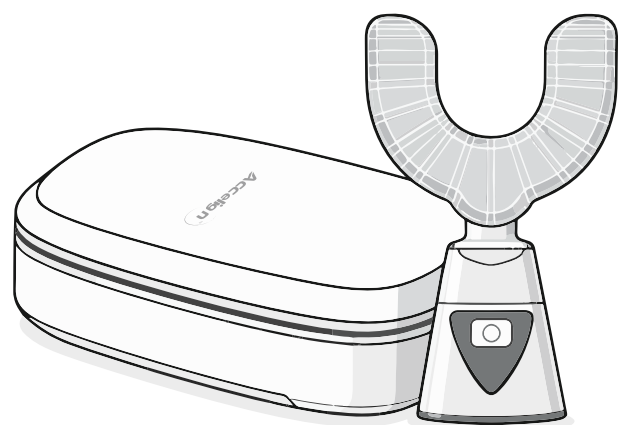


Table of Contents

1.0 Introduction

Thank you for choosing Accelign. Talking with your Orthodontist About the Manufacturer Customer Service Information Intended Use/Indications for Use Contraindications for Use Components

2.0 Use

Set-Up and Charging the Unit Steps for Use and Use Schedule Charging Case

3.0 Care

Cleaning Storage Replacement Disposal

4.0 Safety

Voltage Warnings Precautions

5.0 Help

Customer Service Troubleshooting Warranties FAQs

Thank you for choosing Accelign.™

An advanced orthodontic acceleration device designed to complement fixed or removable orthodontic treatment.

Accelign™ is a registered trademark of Century Medical, Inc.

Accelign is intended for orthodontic patients undergoing active treatment with braces or aligners.

This device delivers gentle pulse vibration to facilitate tooth movement and bone remodeling, thereby reducing the overall orthodontic treatment time. It is lightweight in design, convenient for daily use, and can be safely operated at home, providing a comfortable experience for patients.

1.0 Introduction

Thank you for choosing Accelign

Thank you for choosing Accelign which works with your current orthodontic treatment to deliver a better experience from start to finish. Accelign uses Soft pulse to help your current orthodontic treatment work faster. It does this by generating small vibrations called micropulses to gently accelerate the movement of your teeth as they are guided by your orthodontics.

Talk with your Orthodontist

Your orthodontist is your best resource for information about your care and Accelign. If you need assistance with any aspect of your orthodontic care, ask your orthodontist. Century Medical is not authorized to make any representations related to your specific treatment, or to provide any form of orthodontic treatment advice or consultation. Use this handy reference guide to keep track of your information:

About the Manufacturer

Contact the manufacturer - Century Medical, Inc. - about any questions or concerns that are specifically related to Accelign and its components.

Customer Service Information

For assistance, contact the Century Medical Customer Service Center:
phone: (713)398-9983
Email: info@centurymedinc.com
Online: www.centurymedinc.com

Intended Use/Indications for Use

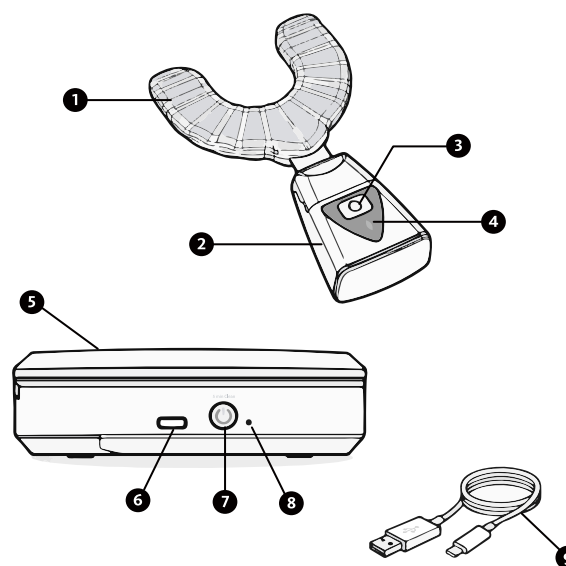
Accelign is an orthodontic accessory intended for use during orthodontic treatment. It is used in conjunction with orthodontic appliances such as braces and helps facilitate minor anterior tooth movement.

Contraindications for Use

- Use of osteoporosis drugs
- Poor oral hygiene
- Periodontal disease that is not under full control for at least 2-3 months prior to the start of treatment.

Components

- | | |
|-------------------------------|---|
| 1 Mouthpiece | Universal brackets fit most people's dental arches, safe food grade silicone. |
| 2 Main unit | Control system. |
| 3 Power switch | Start, shutdown, mode switch button. |
| 4 Indicator light | The light will indicate the current status, when starting, frequency switching. |
| 5 Charging case | Place the main unit into the charging case to charge. |
| 6 Type-C charging port | Please use type-C cable. |
| 7 UVC / Power button | While automatically executing 5 minutes of disinfection. |
| 8 Charging indicator | Charging Case LED Indicator |
| 9 USB Cable | USB Cable (1m) |



2.0 USE

Set Up and Charging the Unit

Before first use, fully charge the device. Charging time: 2-3 hours.

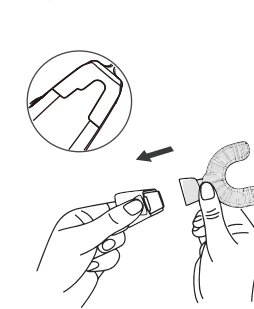
When the main unit is placed into the charging case and the power adapter is connected, press the charging case switch to start charging.

During normal charging, the LED indicator on the charging case will show a steady red light, and the LED indicator on the main unit will slowly flash red.

When the main unit is in operation and its LED indicator flashes red rapidly, please recharge the device as soon as possible.

Do not use the device while it is charging!

Steps for Use



1. Connection of mouthpiece to the main unit

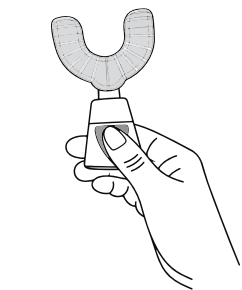
When removing the device from the packaging, check that part mouthpiece is securely attached to the main unit. Insert part mouthpiece in the direction of the arrow until you hear a "click." If not aligned correctly, installation will not be possible. Refer to the diagram when cleaning or replacing part mouthpiece.

2. Wearing Braces (aligners)

Before using the device, always make sure to properly wear the aligner so that it fits snugly against your teeth without causing discomfort. Proper use of the aligner ensures optimal device performance and helps protect your teeth and oral cavity, preventing potential damage or reduced effectiveness caused by improper fit. Confirm that the aligner is firmly in place before activating the device.



Whether you are wearing traditional braces or using clear aligners, this device can be used safely and effectively.



When the battery is low, the red LED indicator flashes rapidly.

3. Press the power switch button to start.

Press the switch button to activate a 10-minute vibration at a frequency of 30Hz, with the LED indicator slowly flashing blue. Press the switch button again to activate a 5-minute vibration at a frequency of 120Hz, with the LED indicator flashing blue rapidly. Press and hold the switch button for 3 seconds to stop the device.

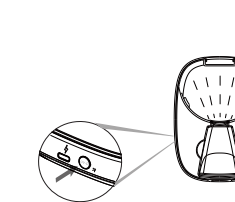
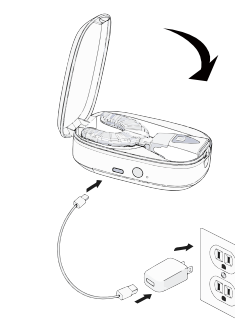
4. Usage Time

Gently bite down on the mouthpiece. Do not apply excessive force.
Mode Selection:
Mode 1:
30Hz for 10 minutes.
Repeat twice daily (Total 20 min).
Mode 2:
120Hz for 5 minutes.
Use once daily (Total 5 min).

Note: Select only one mode. Do not combine modes on the same day to avoid excessive vibration.

Use Accelign for 5-20 minutes per day hands-free and the small vibrations, or micropulses will help your teeth respond to orthodontic treatment more quickly.

Charging Case



During charging, the indicator lights on both the device and the charging case provide clear status information:

While charging, the charging case indicator light shows red, and the main unit indicator light flashes red slowly, indicating that charging is in progress.

Once fully charged, the charging case indicator light changes from red to blue, and the main unit indicator light turns off, confirming that charging is complete.

When the device battery is low, place the main unit into the charging case to recharge. Make sure the charging case is connected to a power source and kept in a dry environment. After closing the lid, press the side button on the charging case to start charging. Do not use the device while charging to avoid affecting battery performance. Once fully charged, disconnect the power supply and store the device properly.

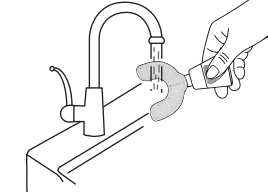
• Press the side button on the charging case once to start charging the device and activate a 5-minute UVC disinfection cycle.

• Press the button again to turn off the UVC function.

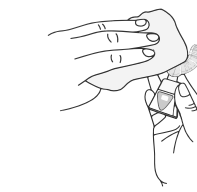
• Press and hold the side button to power off the charging case.

3.0 Care

Cleaning



To maintain hygiene and ensure optimal performance, clean the device after each use. Remove the aligner and rinse thoroughly with clean water, then shake off excess moisture. Do not use alcohol, bleach, or other harsh chemicals, as they may damage the material. Wipe the main unit gently with a soft, clean cloth, avoiding immersion in water or prolonged exposure to moisture. When not in use, store the device properly in the charging case to ensure safety and hygiene.



The device is designed with a detachable structure to separate the mouthpiece from the main unit. To remove the mouthpiece, gently press or pull in the indicated direction until it detaches. Do not apply excessive force, as this may damage the connector or affect future installation.

You can periodically clean the mouthpiece with a toothbrush and toothpaste. Use a soft cloth to wipe the external and internal surfaces of charging case.

Main Unit: IPX7. Charging Case: Keep Dry.

Storage

Disconnect the charging case from the USB cable or wall outlet and clean it as needed. Once cleaned, store the charging case in a cool, dry place away from direct sunlight. The main unit and the accompanying mouthpiece can also be stored inside the charging case. The case is designed to provide safe and hygienic storage, with dedicated compartments to securely hold both the main unit and the mouthpiece. Avoid placing the main unit and mouthpiece in environments that may expose them to extreme temperatures, as this could affect device performance and longevity.

Replacement

The Mouthpiece is the only component of Accelign that may require replacement during the course of your orthodontics.

The mouthpiece may show signs of wear or minor tearing with daily use. During the orthodontic process, your bite pattern may also change, which could require replacement of the mouthpiece. If you are uncertain whether a replacement is necessary, consult your orthodontist for guidance. In most cases, bite marks do not automatically indicate that the mouthpiece must be replaced, but they may suggest that excessive biting force has been applied during use. If any surface of the rigid inner core becomes exposed, the mouthpiece should no longer be used and must be replaced immediately to ensure safety and effectiveness.

Disposal

The mouthpiece and charging case can be disposed of as regular household waste. The rechargeable battery inside the main unit is non-replaceable. To protect the environment, the main unit should be taken to designated collection points for batteries and electronic devices. The crossed-out wheeled bin symbol on the packaging and labels indicates that the device requires separate collection.

4.0 Safety

Voltage

Caution, to reduce the risk of electrocution or fire, DO NOT plug the power adapter into an outlet with a voltage other than that specified on the AC adapter plug. This product is designed to operate within a range of 100 - 240 volts.

Warnings

To reduce the risk of burns, electrocution, fire, or injury:

If this product (including the main unit, mouthpiece, charging case, and USB cable) shows any signs of damage, discontinue use immediately. This product contains no user-serviceable parts. Do not attempt to disassemble or repair the device yourself, as this may cause further damage or safety risks. For assistance, please contact an authorized service center or distributor.

This product is designed to enhance your orthodontic treatment only. Use this product only for its intended use as described in this manual. Discontinue use of this product and immediately contact your orthodontist if any discomfort or pain is experienced.

Accelign must not be shared with others, including both the main unit and the mouthpiece. This device has been customized to your orthodontic case and treatment plan, and is intended for individual use only. As with many medical devices, use without authorization from your orthodontist may result in adverse outcomes. Furthermore, even with disinfection measures, sharing the device may lead to the transmission of viruses and bacteria, posing potential health risks.

This appliance is not intended for use by persons (including children) with reduced physical, sensory, or mental capabilities unless they have been given supervision or instruction concerning use by a person responsible for their safety, or unless otherwise indicated by an orthodontist. Do not use the appliance while performing tasks that require full attention, such as driving or operating heavy machinery. Do not play with the appliance or use it for any purpose aside from its intended use as described in this manual.

Precautions

Consult your orthodontist prior to use of this product if you have had any recent craniofacial surgery (above the neck). Contact your orthodontist if any bleeding, discomfort, or pain occurs after the initial use of Accelign. Accelign meets the required electrical safety and emissions standards; however the appliance has not been tested for effects on any other specific medical devices (such as pacemakers, cochlear implants, nerve stimulators), please contact the other device manufacturers with any questions or concerns about effects on their devices.

5.0 Help

Customer Service

If you have any questions or comments after reading the enclosed materials (this Directions for Use manual), please contact the Century Medical, Inc. Customer Service Center:

phone: (713)398-9983

Email: info@centurymedinc.com

Online: www.centurymedinc.com

Troubleshooting

This section lists several of the more commonly observed troubleshooting situations. If you cannot find the answer to your question here, or if the situation you are experiencing is not addressed here, please contact the Customer Care Center in your country (visit www.centurymedinc.com for contact information).

Device does not power on

Possible Cause: The main unit battery is depleted, or the charging case is not properly connected to power. Solution: Place the main unit inside the charging case and ensure the case is connected to a USB power source or wall outlet. Allow at least 30 minutes of charging before attempting to power on again. If the issue persists, contact an authorized service center.

Charging case indicator light does not illuminate

Possible Cause: Loose power connection, damaged USB cable, or

faulty power adapter. Solution: Verify that the power plug is securely inserted. Try using a different USB cable or adapter. If the indicator still does not light up, discontinue use and seek professional assistance.

Main unit does not charge properly

Possible Cause: The main unit is not correctly placed in the designated slot, or the charging contacts are obstructed by dust or debris. Solution: Ensure the main unit is firmly seated in the charging case. Clean the charging contacts gently with a dry cloth or cotton swab. Do not use liquids or corrosive cleaners.

Mouthpiece shows unusual wear or tearing

Possible Cause: Excessive biting force during use, or prolonged wear beyond its intended lifespan. Solution: Inspect the mouthpiece for usability. If the rigid inner core is exposed, discontinue use immediately and replace the mouthpiece. If uncertain, consult your orthodontist for guidance.

EXPRESS LIMITED WARRANTY

Century Medical, Inc. ("Century Medical") warrants that the product packaged with this warranty (the "Product") will be free from significant defects in materials and workmanship under normal use and service for a period of one year from the date of purchase (the "Warranty Period"). This limited warranty is non-transferable and applies only to the original purchaser and his or her initial dental patient using the Product. This limited warranty also applies only when the Product is used in accordance with the Product manual and directions for use packaged with this Product.

This limited warranty covers all defects encountered in normal use and service but does not apply if: (1) the Product is modified or tampered with or disassembled, (2) the Product is damaged by an Act of God, misuse, abuse, neglect, accident or mishandling, (3) the Product is not used or maintained in accordance with the accompanying user documents, (4) the Product is repaired by someone other than an authorized service center, or (5) the serial number on the Product is defaced, altered or removed. In addition, this limited warranty

does not cover normal wear such as discoloration or fading, and normal wear that does not compromise use of the appliance such as chips, scratches, and abrasions. Your exclusive remedy for breach of this limited warranty during the Warranty Period shall be, at the option of Century Medical the repair or replacement of the Product (with new or comparable rebuilt parts) or a new or refurbished Product, as determined by Century Medical. Warranty repair or replacement shall not extend the original Warranty Period.

NO IMPLIED WARRANTIES; LIMITATIONS ON DAMAGES

The express limited warranty provided above is the only express warranty made to you and is in lieu of all other warranties, whether express or implied, without limiting the generality of the foregoing, century medical disclaims any and all other warranties, express or implied, with respect to the product including its condition, the existence of any latent or patent defects, its non-infringement of third party rights and its merchantability or fitness for any particular use. In no event shall century medical or any of its affiliated or subsidiary companies be liable for any special, incidental, or consequential damages based upon breach of warranty, breach of contract, negligence, tort, or any other legal theory. Such damages include, without limitation, loss of savings or revenue; loss of profit; loss of use; the claims of third parties including, without limitation, dental professionals; and cost of any substitute equipment or services.

LEGAL LIMITATIONS

Some jurisdictions do not allow limitations on implied warranties or damages, so the above exclusions may not apply to you. If any term is prohibited by local law, the remaining terms shall remain in full force. You may have other rights which vary by jurisdiction.

FAQs

Q. How does the Accelign work?

A. It applies mild stimulation to the teeth and alveolar bone, enhancing bone remodeling and reducing treatment time.

Q. Who can use the Accelign?

A. Only patients evaluated and prescribed by an orthodontist.

Q. Can children use it?

A. Not recommended for children under 10. Use only under professional supervision.

Q. Can it replace traditional orthodontic treatment?

A. No. It is an adjunct device and cannot substitute orthodontic therapy, professional supervision.

Q. How long should it be used each day?

A. Typically 5-20 minutes per day, as directed by your orthodontist. Use under professional supervision.

Q. How often should the mouthpiece be replaced?

A. Replace as needed based on wear or as advised by your orthodontist. If the inner core is exposed, replace immediately. Use under professional supervision.

Q. How do I know if I am biting into the Mouthpiece correctly and with the right amount of force?

A. Bite pressure on the Mouthpiece should be just firm enough to hold your Accelign in place without using your hands. Avoid biting too hard the Mouthpiece as that may cause excessive wear.

Q. Can the device be shared with others?

A. No. It is customized for individual use only.

Q. What is the best way to clean Accelign?

A. After each use, remove the mouthpiece from the main unit and rinse thoroughly with warm water. Occasionally, you may clean the mouthpiece with a mild liquid dish soap, gentle hand soap, or toothpaste using a soft brush to maintain hygiene. The main unit can be wiped with a soft cloth as needed. Do not use alcohol-based or corrosive cleaning agents. It is recommended to allow the Accelign device to air-dry completely before placing it back into the charging case to prevent moisture damage.

Q. What should I do if the device is damaged?

A. Discontinue use immediately and contact an authorized service center. The device contains no user-serviceable parts.



Manufacturer:
Century Medical, Inc.
Houston, TX 77057 USA
Tel: (713) 398-9983
info@centurymedinc.com
www.centurymedinc.com

